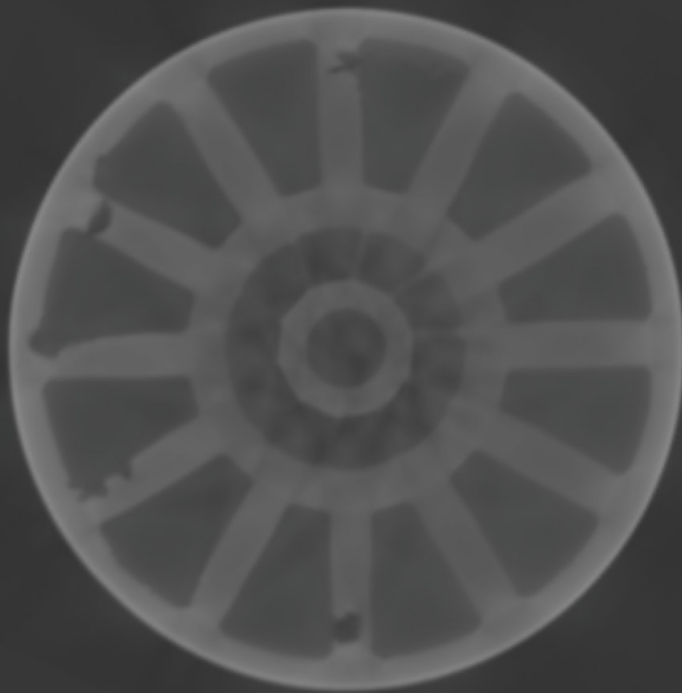



METER



***Affordable On-Prem
Industrial CT***

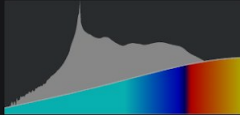
Color

Color Palette

Cold to Hot

Opacity Function Range

0.26 ————— 1



Resolution

————— 1

Transparency

————— 0.74

Shadow

Toggle Shadows

Introduction



David Odell, Business Development @ Meter

David works with Meter's partners and customers to build solutions that reimagine quality inspection and metrology by incorporating CT scanning. From Tier 1 automotive suppliers to running shoe brands, David has implemented CT solutions across a range of industries and applications.

David holds a MS and BS in Mechanical Engineering from the University of Michigan and an MBA from Harvard Business School.

Meter was founded by industry leaders from 3D printing and digital manufacturing.

Prior experience

 AUTODESK.	formlabs 
 Desktop Metal	nTopology

Offices



Global HQ | Cambridge, MA

Office, Lab, R&D, and Service Center



R&D Office | San Francisco, CA

R&D Teams

Executive Leadership



Eduardo Torrealba | Co-founder and CEO

Ex-Formlabs Director of Engineering

M.S. Mechanical Engineering, UIUC



Ric Fulop | Co-founder and Chairman

Co-Founder and CEO Desktop Metal

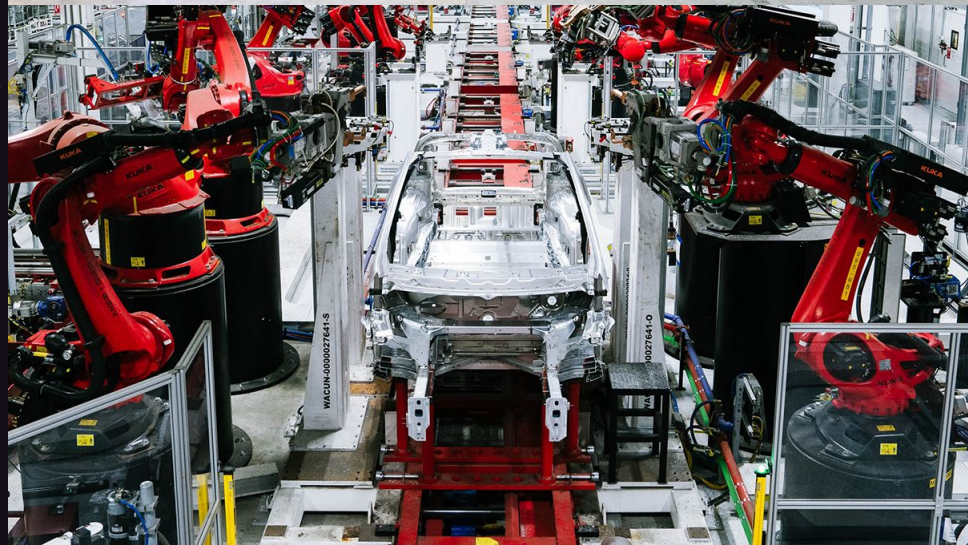
MBA, MIT

Manufacturing has evolved

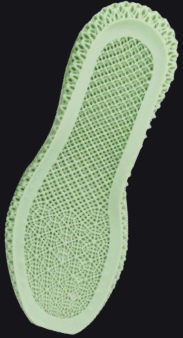
1960s



Today

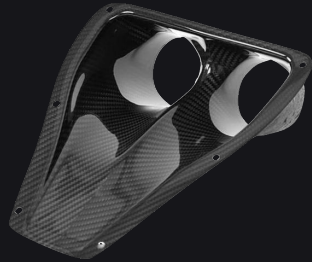


Parts and products are increasing in complexity



Additive Manufacturing

Polymer



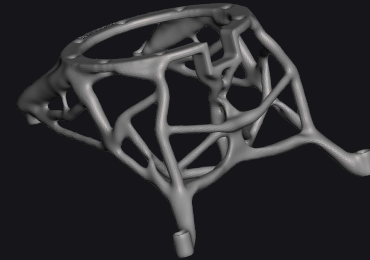
Composite Layup

Carbon Fiber



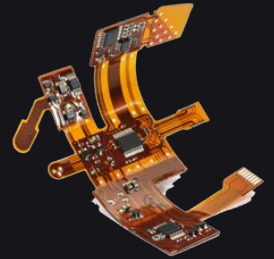
Injection Molding

ABS-PC



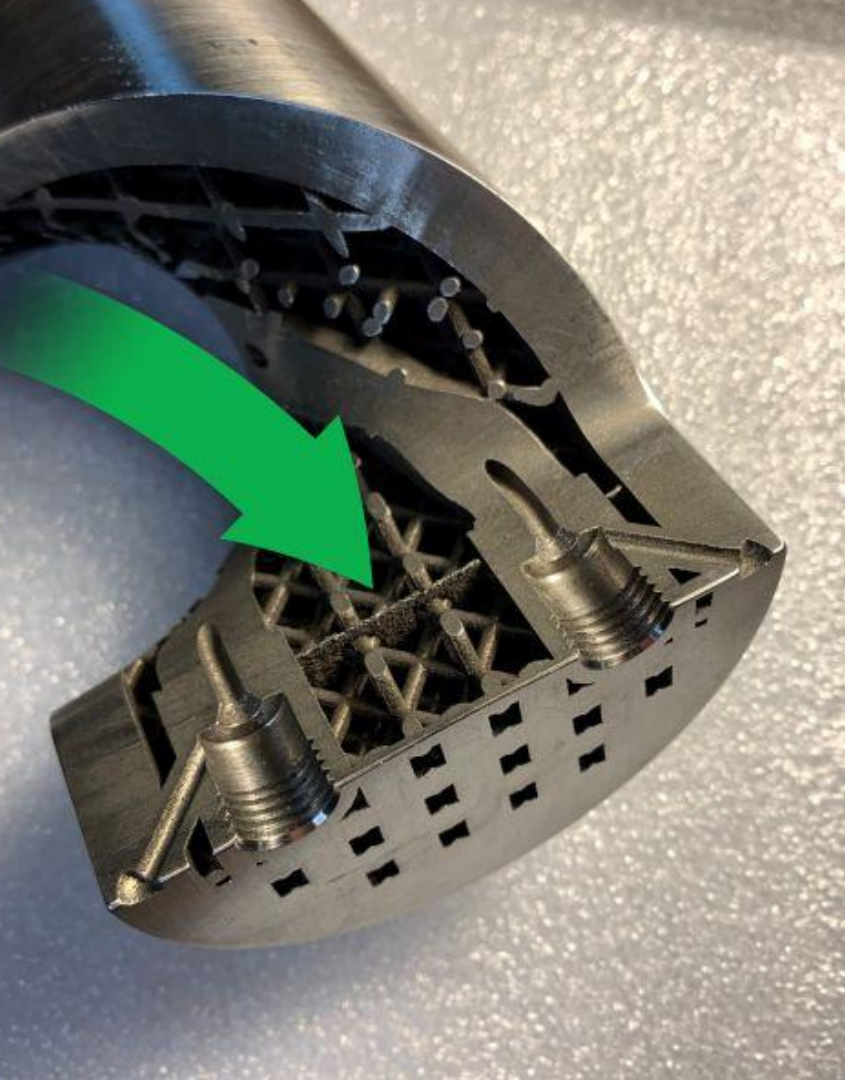
Casting

Magnesium



Electronic Fabrication

Hybrid Laminate



Bad inspection can result in:

Product Recalls

Poor Product Reviews

High Scrap Rates

Over-Engineering

Slow Technology Adoption

Vendor Mistakes

RMAs

Schedule Delays

Extensive Rework

Longer Design Cycles

More Labor

Extra Design Cycles

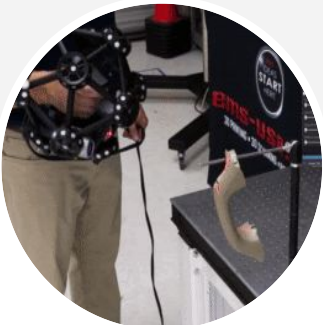
Inspection technology remains unchanged



Destructive Testing

Variable Cost

- ✓ Intrinsic Properties
- ✓ Established Workflows
- ✗ Non-representative



3D Scanning

\$20,000 Avg.

- ✓ Affordable
- ✓ Easy to use
- ✗ Limited data



CMM

\$150,000 Avg.

- ✓ Accurate
- ✓ Repeatable
- ✗ Slow Setup Times

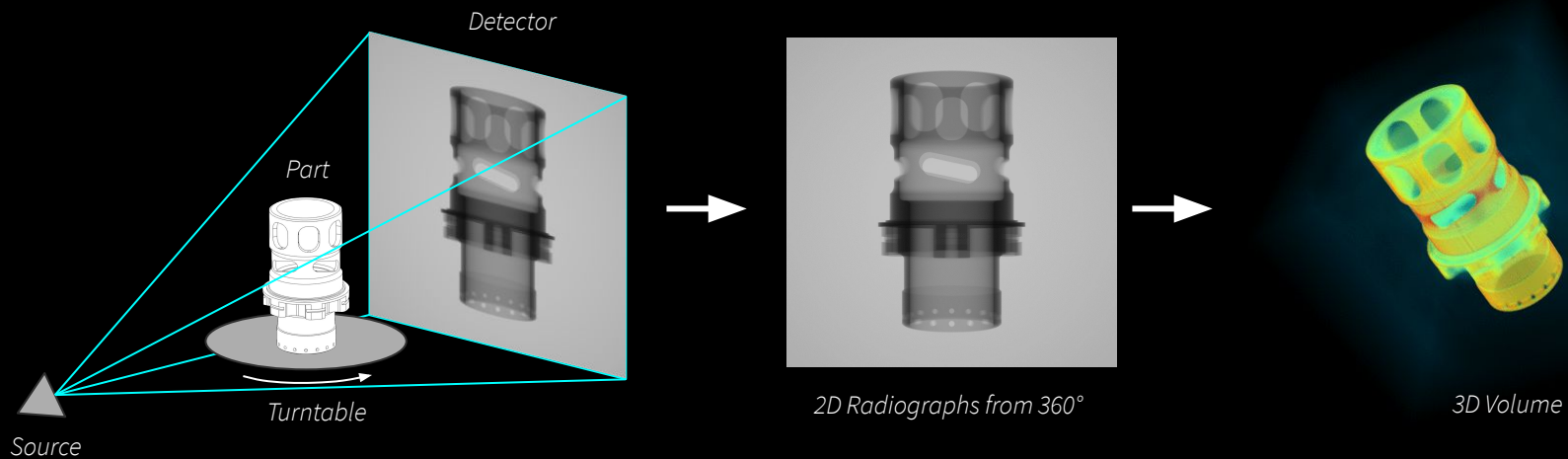


Industrial CT Scanning

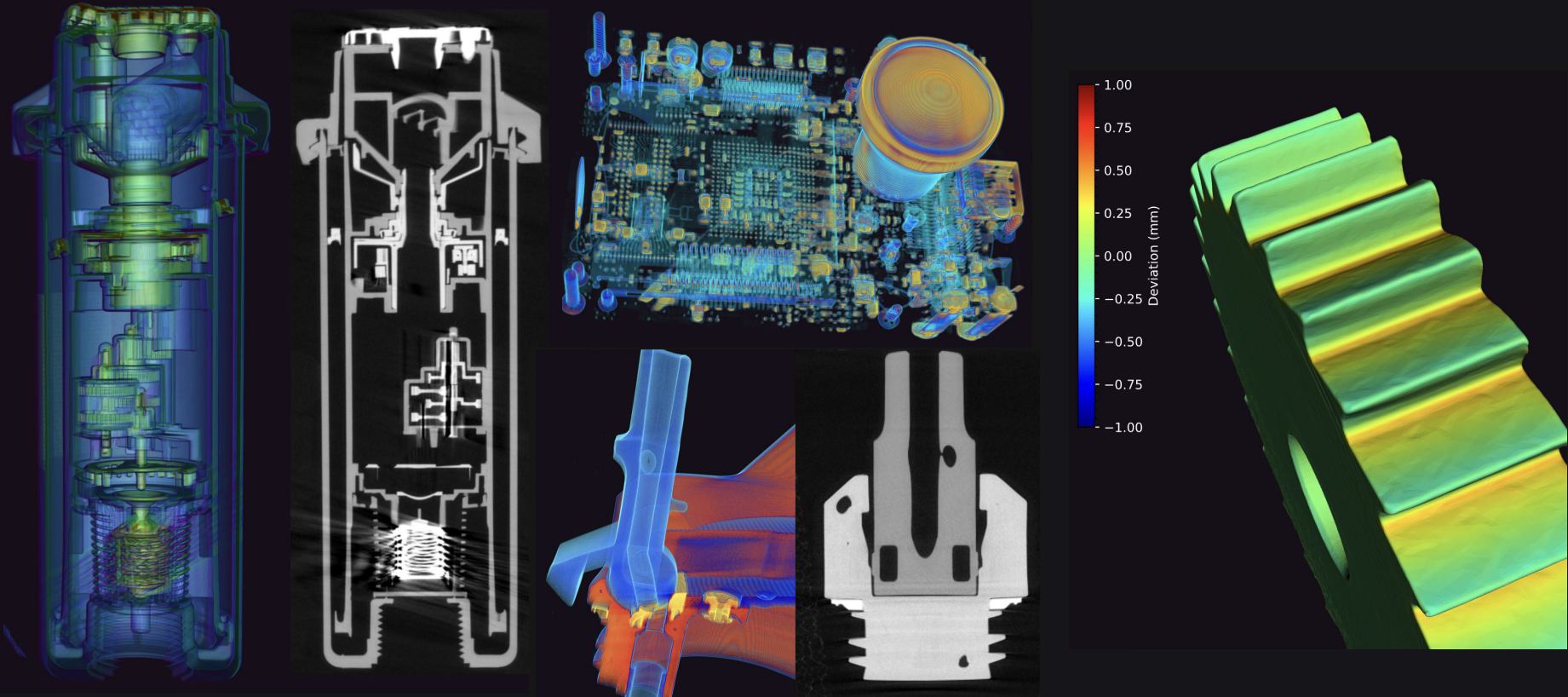
\$1M Avg.

- ✓ Wide applicability
- ✓ Highly customizable
- ✗ Inaccessible

How X-Ray CT Works



CT is the **gold standard** of inspection



But it's inaccessible to most companies

Cost: \$500,000 - \$1,000,000

Room-sized machine

Accessible in one location



Requires licensed software + heavy training (\$50k)

No easy way to share data or collaborate (10 GB files, PDFs)

Dedicated, highly trained engineer



METER

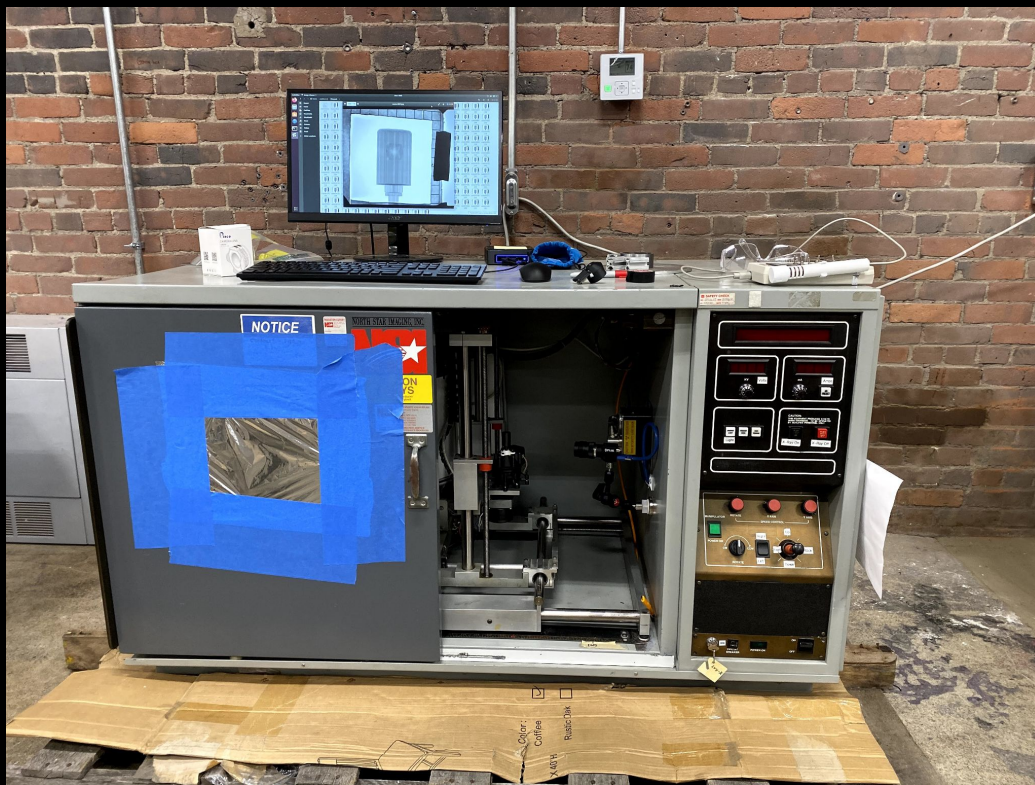
For the **first time**,
any company can **widely adopt**
X-ray CT Scanning

10x Lower Cost

Easy to Use

High-Resolution

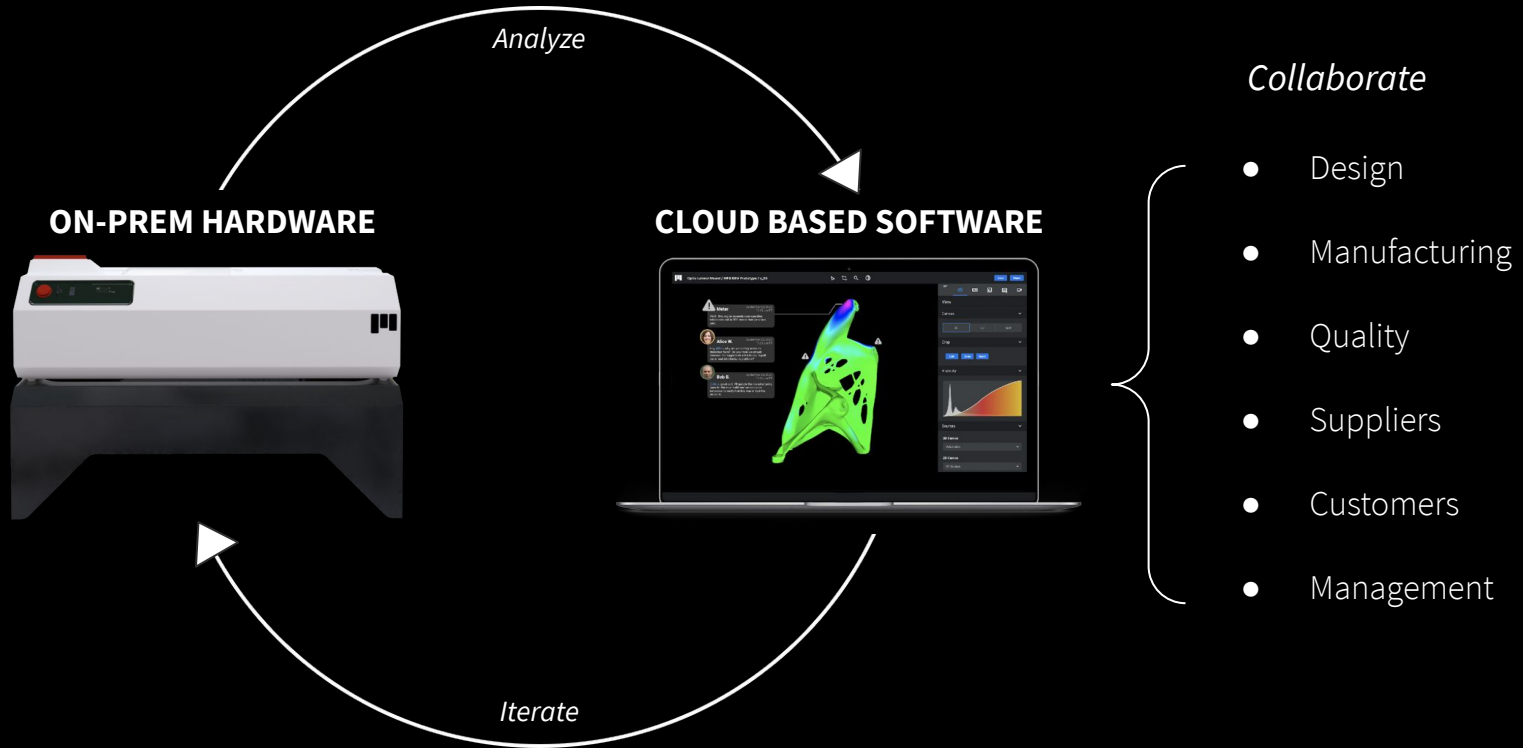
Version 1.0



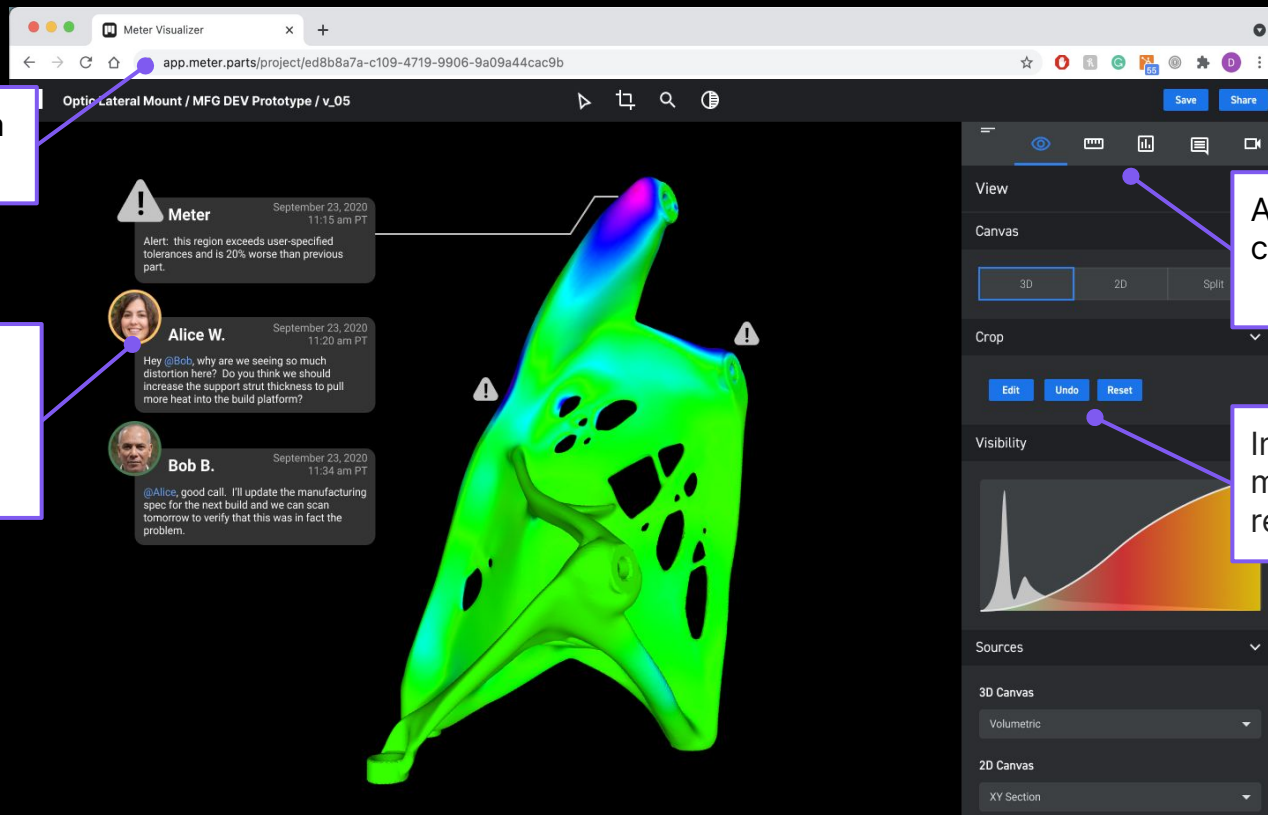
- Purchased old X-ray cabinet off Ebay
- Build themselves to prove out the idea
- Used prototype to raise Seed money from VCs and work with early customers



Version 2.0: Meter's X-ray CT Scanning Platform



Seamlessly share CT data and make decisions faster



Share results via a simple URL

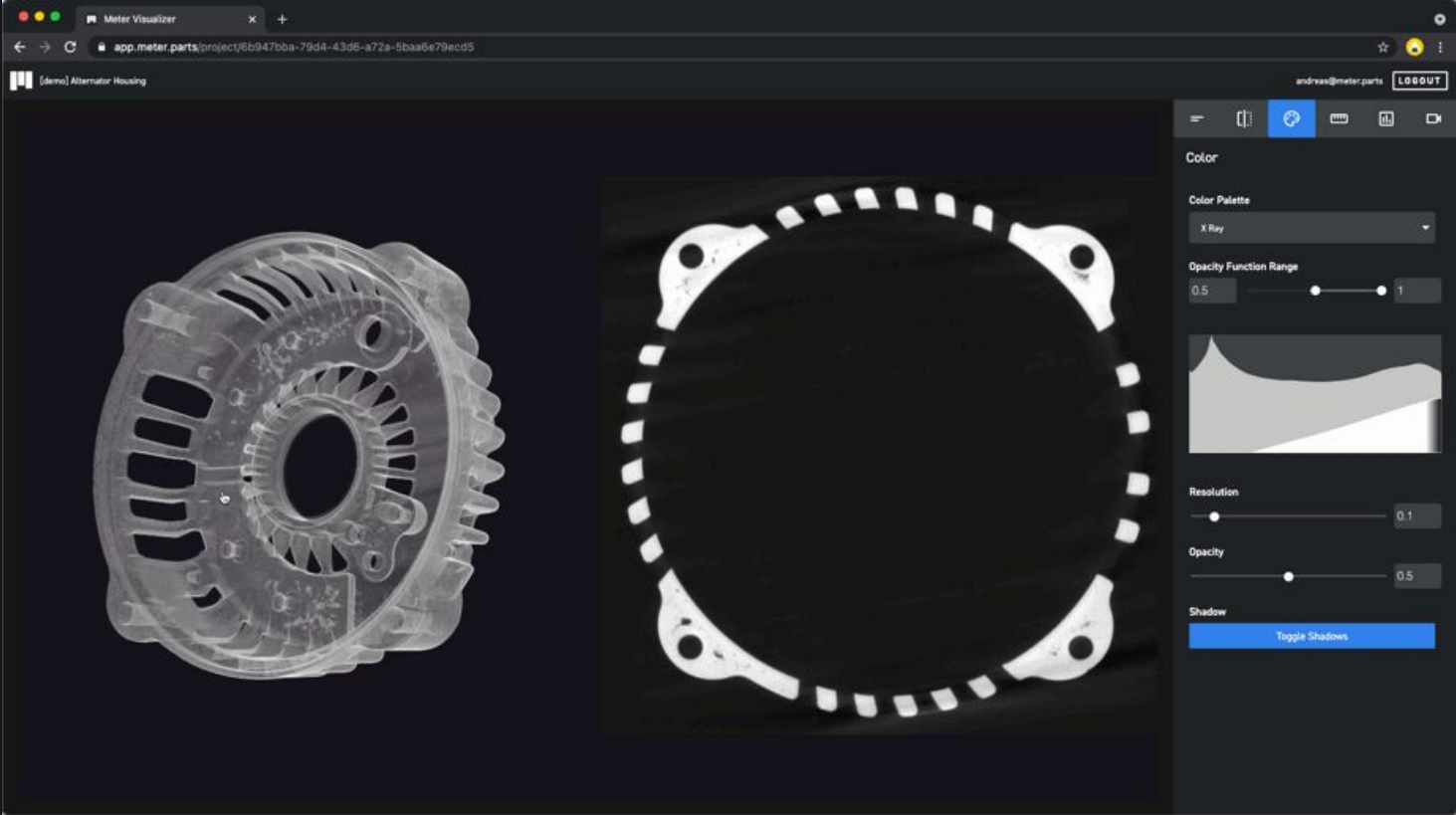
[Future] Tag, comment, and collaborate like Google Docs

Advanced analysis capabilities

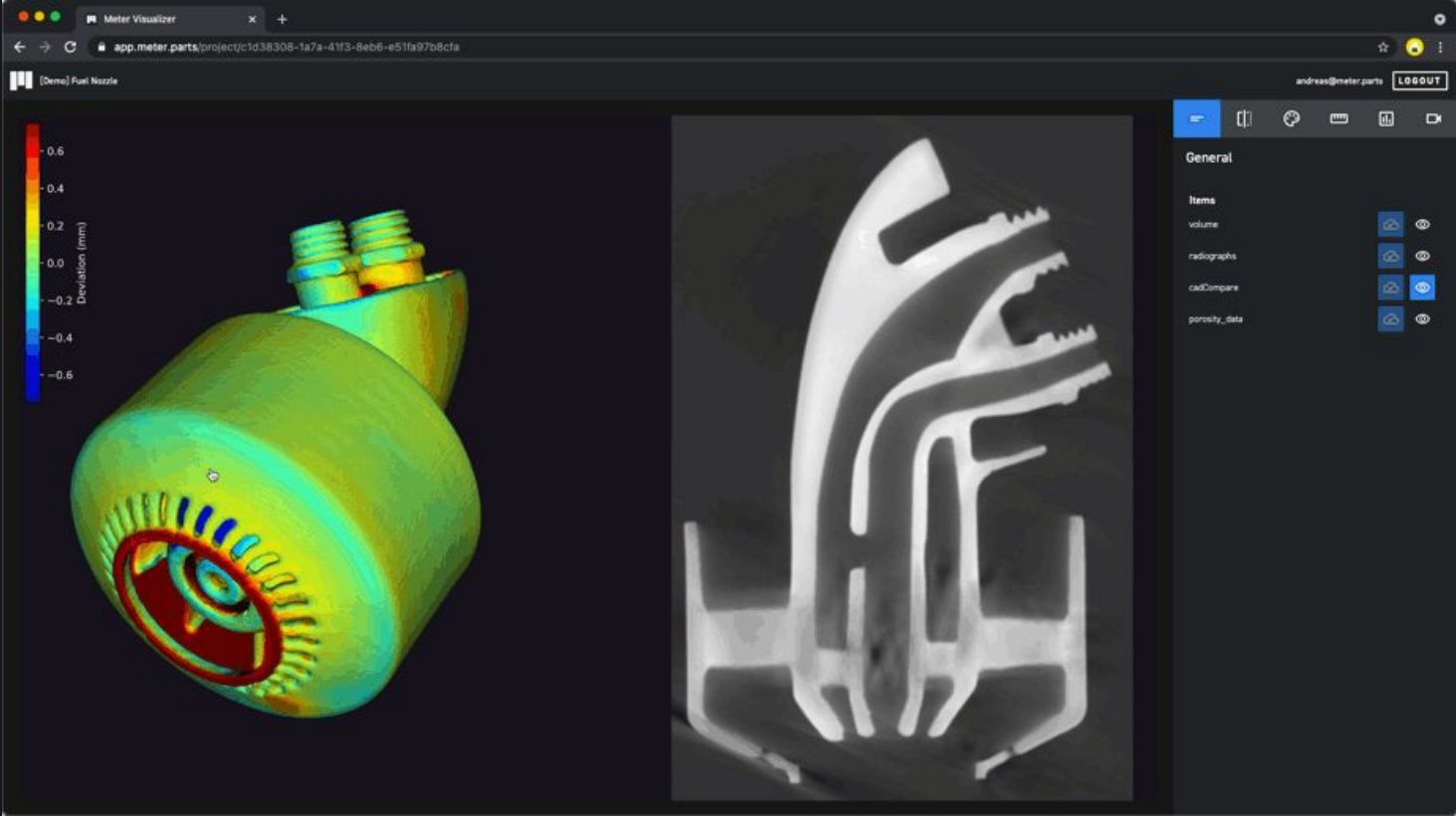
Intuitive interface, minimal training required



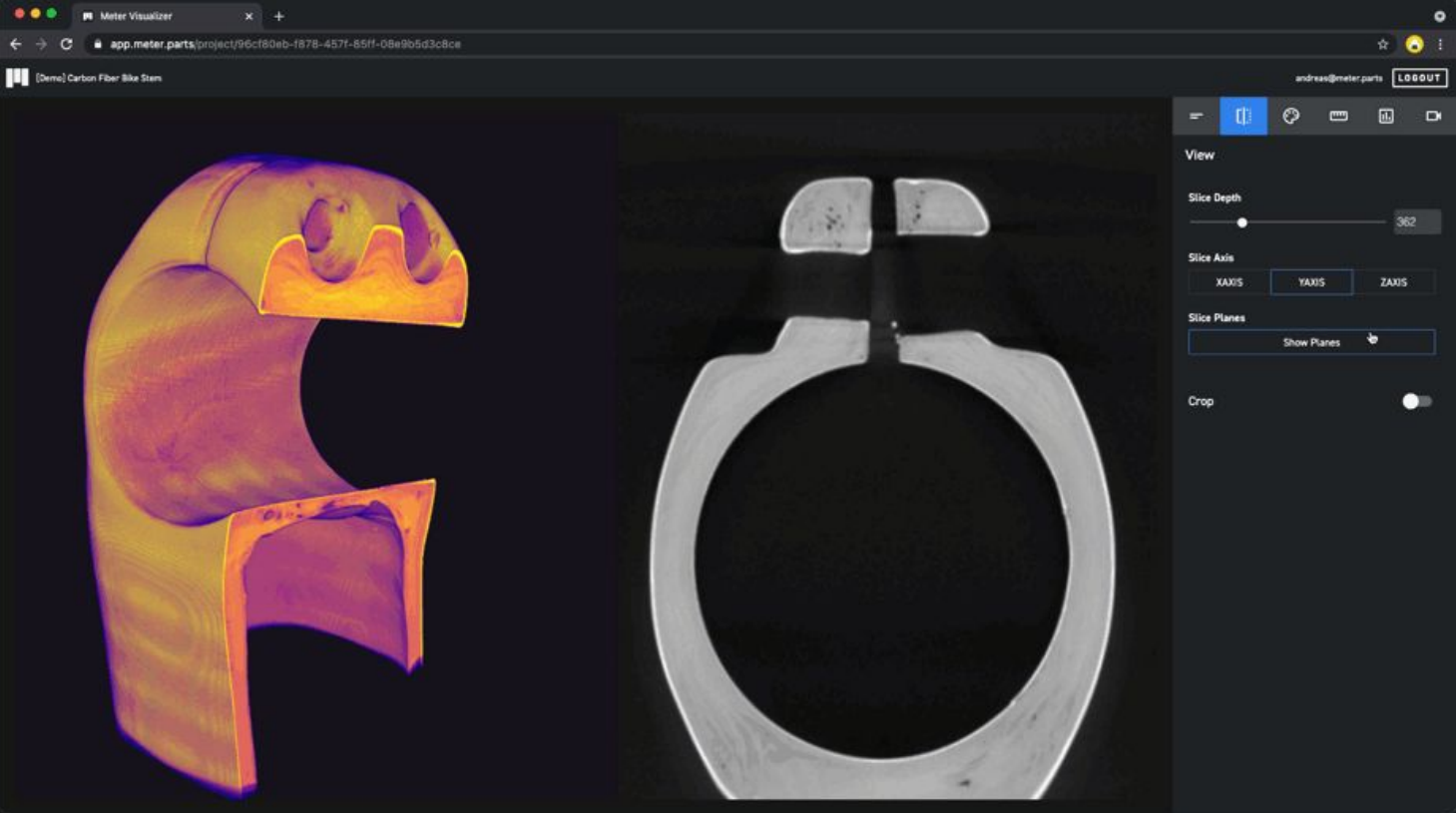
Application: Porosity Analysis



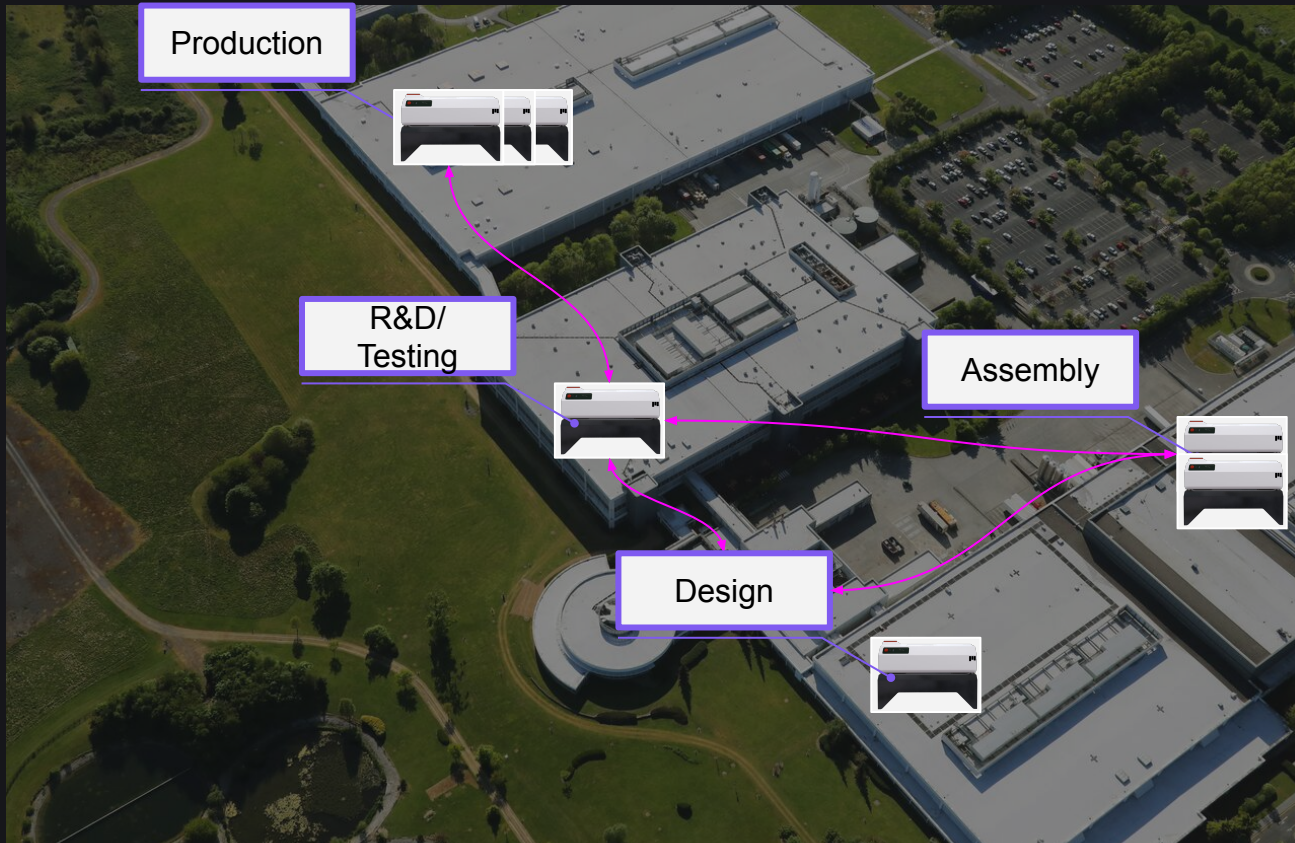
Application: CAD Compare



Application: Defect Detection | Composites



Future: Adoption of CT at scale



Today

- Several dozens customers from a range of industries (tier 1 automotive supplier, athletic equipment, semiconductor, electronics, plastic manufacturing)
- 50+ people, located in Boston and San Francisco
- Completed Series A and B fundraising from top Silicon Valley VCs



David Odell

david.odell@meter.parts

Meter

38 Cameron Ave Cambridge MA 02140

sales@meter.parts | 617-249-4392



Accessible Industrial
CT Scanning